



Road Traffic
Management Corporation

FESTIVE SEASON ROAD TRAFFIC REPORT

1 DECEMBER 2012 - 11 JANUARY 2013



transport

Department:
Transport
REPUBLIC OF SOUTH AFRICA



INDEX		
Section	Topic	Page
1	Introduction	2
2	Traffic Law Enforcement	3
3	Driver Population	5
4	Vehicle Population	7
5	Traffic volumes	10
6	Number of Fatal Crashes	11
7	Crashes per Day of Week	12
8	Crashes per Time of Day	13
9	Number of Fatalities	14
10	Fatalities per road user group	15
11	Severity rate	16
12	Major fatal crashes over Festive	17
13	Media Liaison	18
14	Conclusion	18

1. INTRODUCTION

At the beginning of every festive season Road Traffic Management Corporation (RTMC) with its Rolling Enforcement plan in collaboration with provincial and municipal traffic departments embarks on major clean up campaigns that target road users. Although the festive season commenced on 1 December 2012 and ended on 11 January 2013 the plan was implemented in October 2012.

The motivation behind the early implementation of the plan was to prepare traffic law enforcement officials to be ready when the actual festive season commenced.

The festive plan is informed by:

- Increased traffic volume along major arterial routes during the school closure periods;
- The industry closure periods;
- Christmas and New Year long weekends;
- Subsequently long weekends ahead of school re-opening;
- Assumption that most people take holidays mostly to the coastal areas;
- Migrant workers returning back to their respective homes to their families;
- Churches holding their prayer gatherings; and
- ANC elective conference in Mangaung.

The aim of the Rolling Enforcement plan is to concentrate on all unroadworthy, private and public transport motor vehicles as well as paying special attention to preventing crashes in hazardous location and thus attempting to curb the fatality rate on our roads. The following existing methods of operation were used to drive the plan:

- Roadblocks;
- Roadside checks;
- Patrols;
- Awareness campaigns; and
- Media activities.

Vehicles were stopped, searched and checked with specific emphasis placed on driver and vehicle fitness to eradicate lawlessness before, during and after the festive period.

It must be noted that the primary source of the statistical data about the fatal crashes is received from South African Police Service (SAPS) CAS list and further to this the Corporation receive the Quick response forms from various police stations on the fatal crashes. RTMC captures processes and verifies all the statistics in order to compile a consolidated report.

The 30 day international practice which entails taking into account all people who die within 30 days after the occurrence of a road crash has been taken into consideration. These standards enable accountability and comparability for purposes of reporting against the Decade of Action targets.

2. LAW ENFORCEMENT ACHIEVEMENTS

The National Rolling Enforcement Plan continued and intensified by various law enforcement authorities. One of our targets was to stop and check million vehicles per month. A total number of 1 585 920 vehicles were stopped and checked.

Out of 1 585 920 vehicles that were stopped and checked, 5 420 vehicles were discontinued (the vehicle has to be presented at the vehicle testing station for fitness test before the licence and roadworthy certificate can be re-issued), and about 4 625 were impounded (the vehicles were not fit to be on the road, as result they had to be taken off the road immediately).

Driver fitness and compliance of the road traffic law remained part of the activities.

The following number of arrests was achieved to that effect:

- Drinking and driving : 3059;
- Warrant of arrests: 2697; and
- Taxi/ Public transport permits: 1100.

Other arrests that were registered included reckless and negligent driver behaviour, driving without a driver's licence, false documentation, goods overloading and other road traffic violations.

A total of **1 585 920** vehicles were stopped and checked and a total of 8 602 arrests were made during the period under review.

Table 1 : Summary of Enforcement Activities: 1 December 2012-8 January 2013

Authority	Vehicles stopped	Notices issued	Notices issued - Seatbelt Front	Notices issued - Seatbelt Rear	Vehicles Discontinued	Vehicles Impounded
Limpopo	187 663	21 829	928	9	439	293
Gauteng	261 284	394 206	10 184	3	824	96
North West	152 321	58 799	2 196	0	175	1 333
Mpumalanga	206 995	38 150	2 139	36	1 309	2 851
Free State	79 388	14 648	868	291	31	0
Kwa-Zulu Natal	227 090	75 490	6 613	294	1 299	0
Eastern Cape	167 914	23 626	2 834	15	536	0
Western Cape	233 161	72 211	5 639	940	189	40
NorthernCape	39 561	6 398	386	0	21	13
National Traffic Police	30 544	2 438	203	9	598	0
RSA total	1 585 920	707 794	31 990	1 596	5 420	4 625

Table 2: Number Arrests

Authority	Number of Arrests Reported: 1 December 2012 – 8 January 2013										
	Drink & Drive	Reckless & Negligent Driving	Excessive Speed	Passenger Overloading	Goods Overloading	Warrant of arrests	Taxi/Public Transport Permits	False Documentation	No drivers licence	Other	TOTAL
Limpopo	65	3	64	0	141	1376	0	2	0	8	1 659
Gauteng	260	138	63	0	2		0	9	19	16	507
North West	143	4	2		45	1401	0	5	3	14	1 617
Mpumalanga	120	9	34	215	43	43	929	2	2	13	1 410
Free State	19	4	11	0	0	0	0	4	3	15	56
Kwa-Zulu Natal	1585	18	104	0	8	716	130	35	59	111	2 766
Eastern Cape	306	15	131	0	0	484	0	2	43	261	1 242
Western Cape	470	13	3		3	51	41	9	0	36	626
Northern Cape	8	0	0	0	0	2	0	0	0	2	12
National Traffic Police	83	0	0	0	0	0	0	0	0	0	83
RSA total	3 059	204	412	215	242	2 697	1100	68	129	476	8 602

3. DRIVER POPULATION

3.1 Driving Licences Issued

The number of driving licences issued increased from 9,682,452 in December 2011 to 10,155,165 in December 2012, it increased by a total number of 472,713 (4.88%). Detail on the number of driving licences issued per category is given in table and graphically reflected in the figure below:

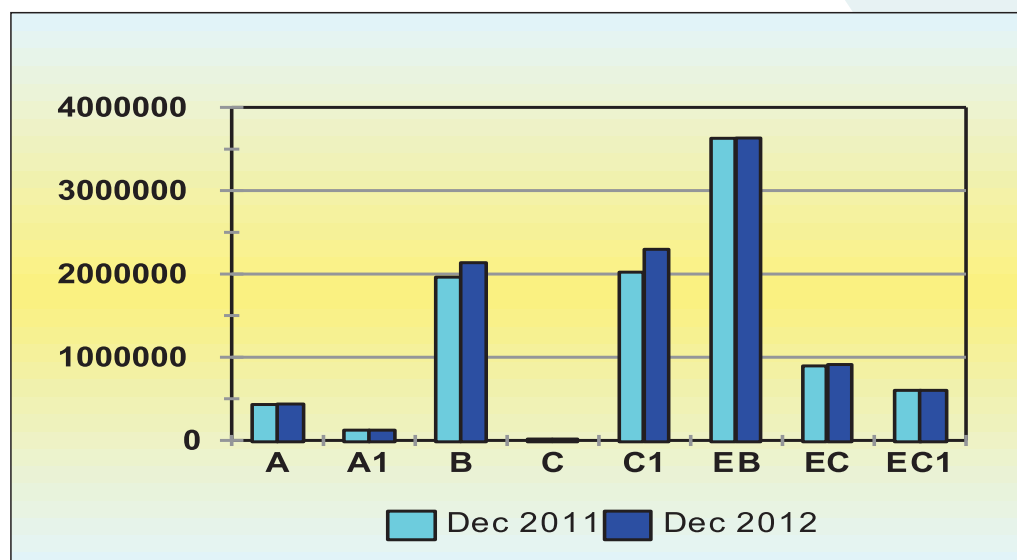
Table 3 : Number of Driving Licences Issued

Table 3 : Number of Driving Licences Issued					
Category	Description	Dec 2011	Dec 2012	Change	% Change
A	Motorcycle < 125 cub.cm	429,872	437,914	8,042	1.87
A1	Motorcycle > 125 cub.cm	123,272	123,356	84	0.07
B	Motor vehicle < 3,5000 kg	1,961,788	2,135,130	173,342	8.84
C	Articulated motor vehicle <16,000 kg	16,822	18,001	1,179	7.01
C1	Motor vehicle 3,500- 16,000 kg	2,022,779	2,296,011	273,232	13.51
EB	Articulated vehicle 3,500 16,000 kg	3,628,141	3,632,643	4,502	0.12
EC	Motorvehicle > 16,000 kg	896,723	910,885	14,162	1.58
EC1	Articulated vehicle > 16,000 kg	603,055	601,225	(1,830)	-0.30
Total		9,682,452	10,155,165	472,713	4.88

Source: eNatis

The table above indicates that most people still opt for code C1 compared to code B. The assumption is that code C1 doesn't require side parking.

Figure 1: No of Driving Licences Issued per category



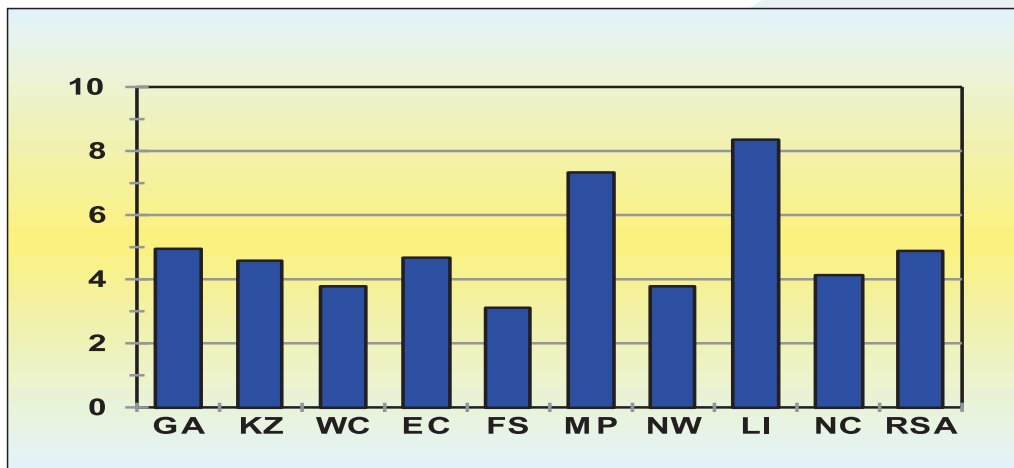
The analysis is limited as the information is not under the direct control of RTMC

Provincial information in this regard is given in table and the percentage change with regard to all licences issued per province is reflected in the graph below:

Table 4 : Number of Driving Licences Issued per Province										
Year	GA	KZ	WC	EC	FS	MP	NW	LI	NC	RSA
Dec 2011	3,421,668	1,538,708	1,581,157	706,922	525,664	620,130	469,228	633,787	185,188	9,682,452
Dec 2012	3,591,029	1,609,119	1,640,888	739,954	542,029	665,598	486,976	686,745	192,827	10,155,165
Change	169,361	70,411	59,731	33,032	16,365	45,468	17,748	52,958	7,639	472,713
% Change	4.95	4.58	3.78	4.67	3.11	7.33	3.78	8.36	4.12	4.88

The highest increase in the number of driving licences issued per province were recorded in Limpopo with 8.36% and followed by Mpumalanga with 7.33%. The remaining provinces recorded an increase of between 3% and 5%.

Figure 2: Percentage Change in Driving Licences Issued per Province



4. VEHICLE POPULATION

The number of registered vehicles increased by 417,621 (4.10%) from 10 193 050 on 31 December 2011 to 10 610 671 vehicles on 31 December 2012. Detail per type of vehicle is given in table below:

Table 5 : Number of Registered Vehicles	Number registered	Number registered	Change	% Change	% of Group	% of Total
Motorised Vehicles	Dec 2011	Dec 2012			Dec 2012	Dec 2012
Motorcars	5,832,078	6,110,556	278,478	4.77	64.05	57.59
Minibuses	284,184	285,855	1,671	0.59	3.00	2.69
Buses	49,253	51,686	2,433	4.94	0.54	0.49
Motorcycles	339,913	355,616	15,703	4.62	3.73	3.35
LDV's - Bakkies	2,074,363	2,152,713	78,350	3.78	22.57	20.29
Trucks	333,245	342,122	8,877	2.66	3.59	3.22
Other & Unknown	237,769	241,067	3,298	1.39	2.53	2.27
Total Motorised	9,150,805	9,539,615	388,810	4.25	100.00	89.91
Towed Vehicles						
Caravans	104,825	104,845	20	0.02	9.79	0.99
Heavy Trailers	157,140	164,908	7,768	4.94	15.40	1.55
Light Trailers	763,461	784,484	21,023	2.75	73.24	7.39
Other & Unknown	16,819	16,819	0	0.00	1.57	0.16
Total Towed	1,042,245	1,071,056	28,811	2.76	100.00	10.09
All Vehicles	10,193,050	10,610,671	417,621	4.10		100.00

The information above shows that on a percentage basis the biggest change was for heavy trailers and buses which increased by 4.94%, heavy trailers from 157 140 to 164 908 and buses from 49 253 to 51 686. This change was followed by motorcars which increased by 4.77% to 6 110 556. Motorcycles increased by 4.62% to 355 616.

The monthly percentage changes over the past year for specific types of vehicles as well as motorised and towed vehicles, are shown in the figures below:

Figure 3: Annual Percentage Change in Motorised Vehicles per month

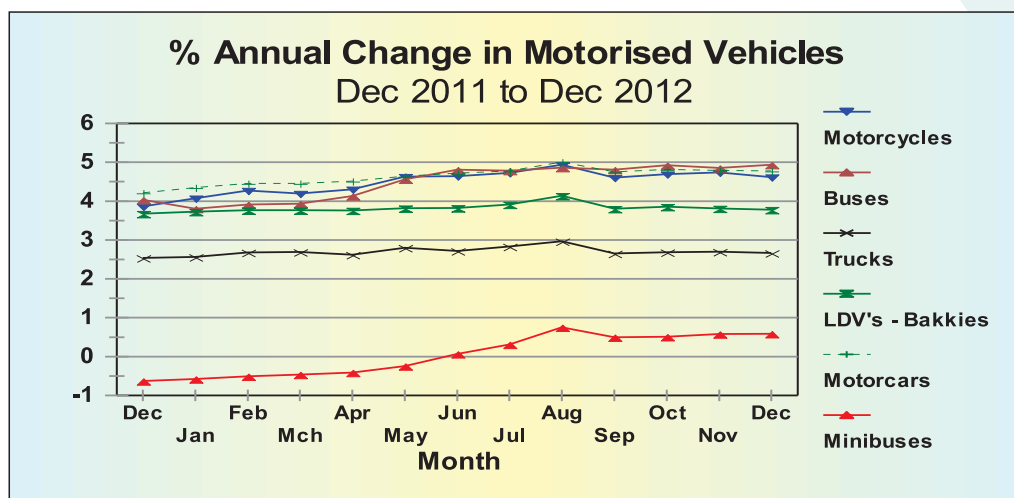
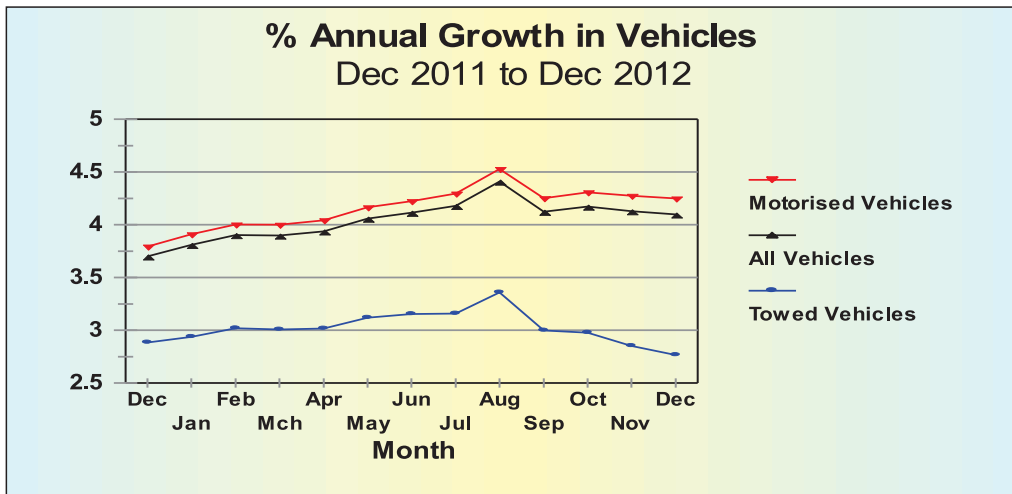


Figure 4: Annual Percentage Growth in Motorised Vehicles per month



The total motor vehicle population per province for December 2011 and December 2012 respectively, is given in table and reflected in the figure below.

Table 6 : Number of Registered Vehicles per Province	Number registered Dec 2011	Number registered Dec 2012	Change	% Change	% of Total Dec 2012
Gauteng	3,960,078	4,112,343	152,265	3.85	38.76
KwaZulu-Natal	1,381,721	1,438,997	57,276	4.15	13.56
Western Cape	1,640,723	1,698,173	57,450	3.50	16.00
Eastern Cape	694,821	715,548	20,727	2.98	6.74
Free State	563,594	579,461	15,867	2.82	5.46
Mpumalanga	672,481	718,213	45,732	6.80	6.77
North West	527,402	546,669	19,267	3.65	5.15
Limpopo	523,452	558,813	35,361	6.76	5.27
Northern Cape	228,778	242,454	13,676	5.98	2.29
RSA	10,193,050	10,610,671	417,621	4.10	100

Figure 5: Annual Percentage Growth in Vehicle Population per Province

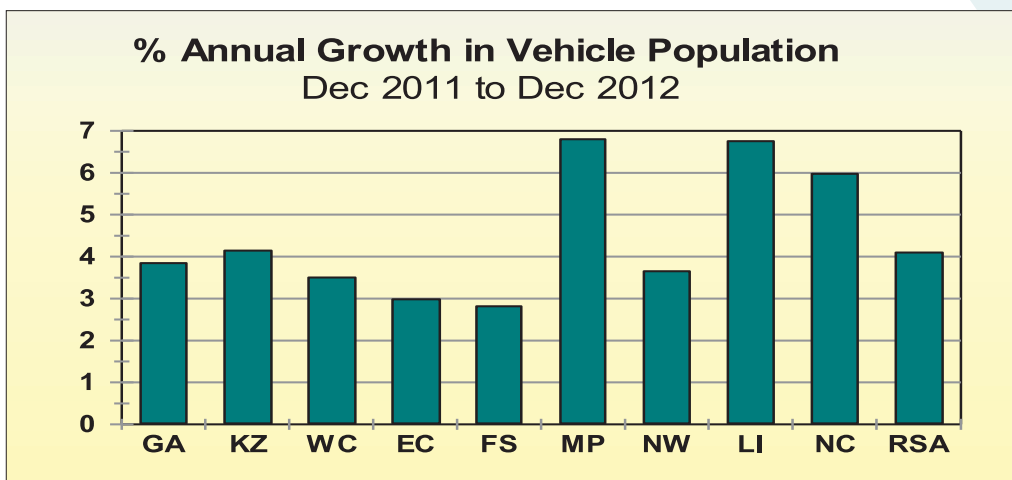
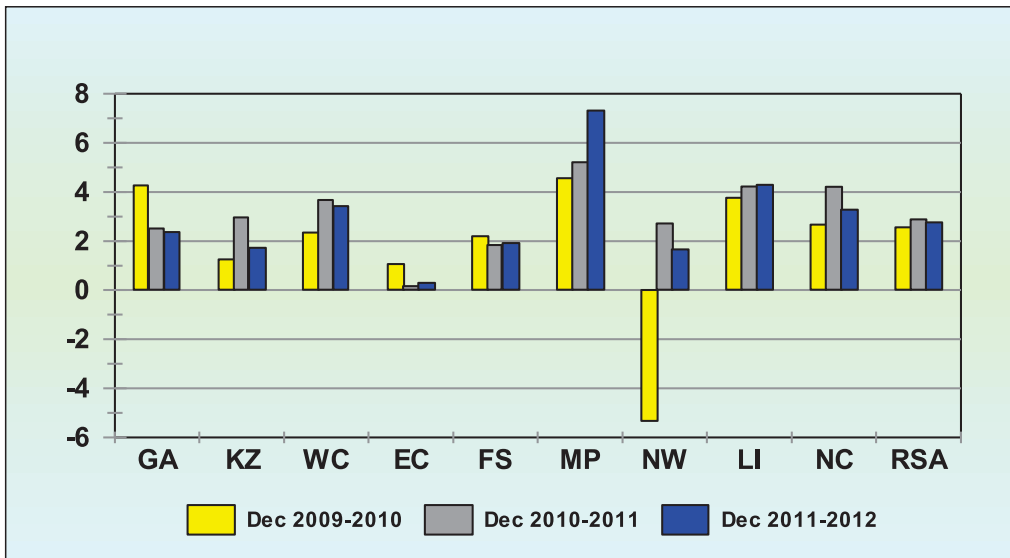


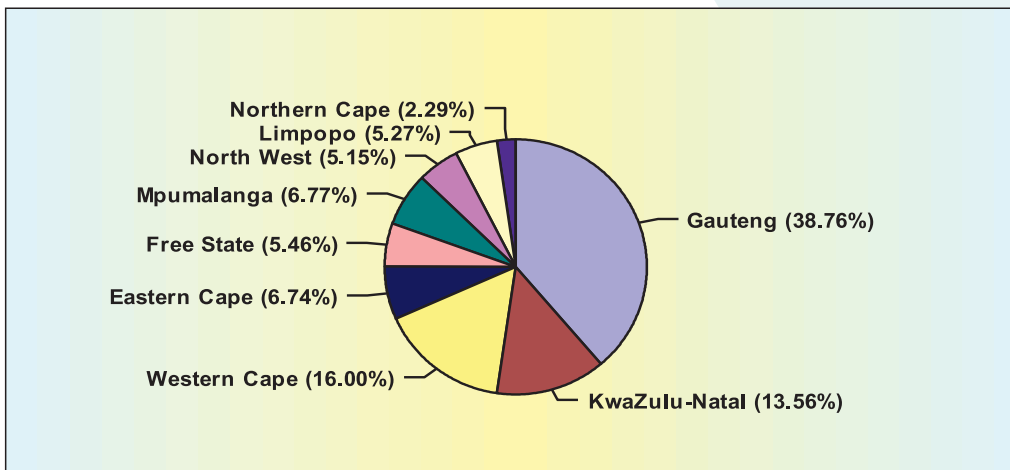
Figure 5: Annual Percentage Growth in Vehicle Population per Province



Over the past year from December 2011 to December 2012 the biggest percentage growth in total vehicles was recorded in Mpumalanga with a growth of 7.32% followed by Limpopo with a growth of 4.29% and Western Cape with 3.43%.

The percentage vehicles registered per province on 31 December 2012 is reflected in the graph below:

Figure 6: Percentage of Vehicles Registered per province



The information in the graph above shows that 38.76% of all vehicles are registered in Gauteng, 16% in Western Cape and 13.56% in KwaZulu-Natal.

5. TRAFFIC VOLUMES

Traffic volumes on the main routes over the Festive Season period for the years 2007, 2008, 2009, 2010, 2011, 2012 and 2013 are given in the table 10 below:

Table 7: Traffic Volumes over Festive 2007/2013									
Route	Site Name	2007/08	2008/09	2009/10	2010/11	2011/12	2012/13	Change 2011/12 & '2012/13	% Change 2011/12 & '2012/13
N1	Carousel plaza	807 023	816 430	834 418	887 835	877 195	875474	-1 721	-0.2
N1	Kranskop	657 805	692 101	729 906	789 513	779 973	778434	-1 539	-0.2
N1	Huguenot plaza	572 594	543 422	564 922	578 118	579 377	539173	-40 204	-6.9
N1	Verkeerdevlei	389 199	375 837	443 833	483 139	466 535	468971	2 436	0.5
N2	Groot Brak	684 634	659 312	656 994	662 839	636 640	645269	8 629	1.4
N3	Tugela plaza	571 584	555 863	579 176	630 305	643 180	658700	15 520	2.4
N4	Middelburg	777 868	843 302	886 423	1 011 163	1 063 596	987730	-75 866	-7.1
Average traffic		637 244	640 895	670 810	720 416	720 928	707 679	-13 249	-1.8

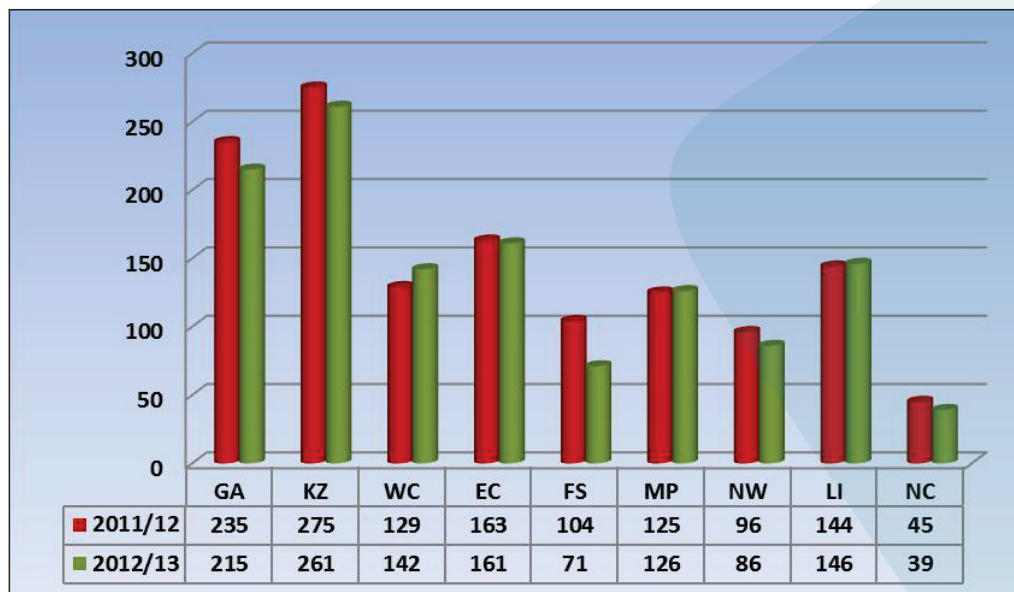
The information in the table above shows an overall increase in traffic volumes of about 49,606 vehicles (7.4%) from an average of 670,810 vehicles at 7 counting stations in 2009/10 to an average of 720,416 vehicles during 2010/11. On a percentage basis the biggest increase was recorded at Middleburg on the N4 in the Mpumalanga where the increase 14.1%. On the N1 the increase was 8.9% at the Verkeerdevlei toll plaza. Most roads follow the same trend every year with little increases or decrease.

6. NUMBER OF FATAL CRASHES

The number of fatal crashes per province over the Festive Season 2012/13 is given in the table below:

Table 8 : Number of Fatal Crashes per Province over Festive										
Year	GA	KZ	WC	EC	FS	MP	NW	LI	NC	RSA
2011/12	235	275	129	163	104	125	96	144	45	1 316
2012/13	215	261	142	161	71	126	86	146	39	1 247
change	-20	-14	13	-2	-33	1	-10	2	-6	-69
% change	-8.51	-5.09	10.08	-1.23	-31.73	0.80	-10.42	1.39	-13.33	-5.24

Figure 7: Number of Fatal Crashes per Province over Festive



The number of fatal crashes decreased by 69 (5.24%) from 1316 crashes over the same period the previous year to 1247.

With the exception of Gauteng and Western Cape, Mpumalanga and Limpopo, a decrease in the number of fatal crashes was recorded in all the provinces. On a provincial percentage basis the biggest decrease were recorded as follows:

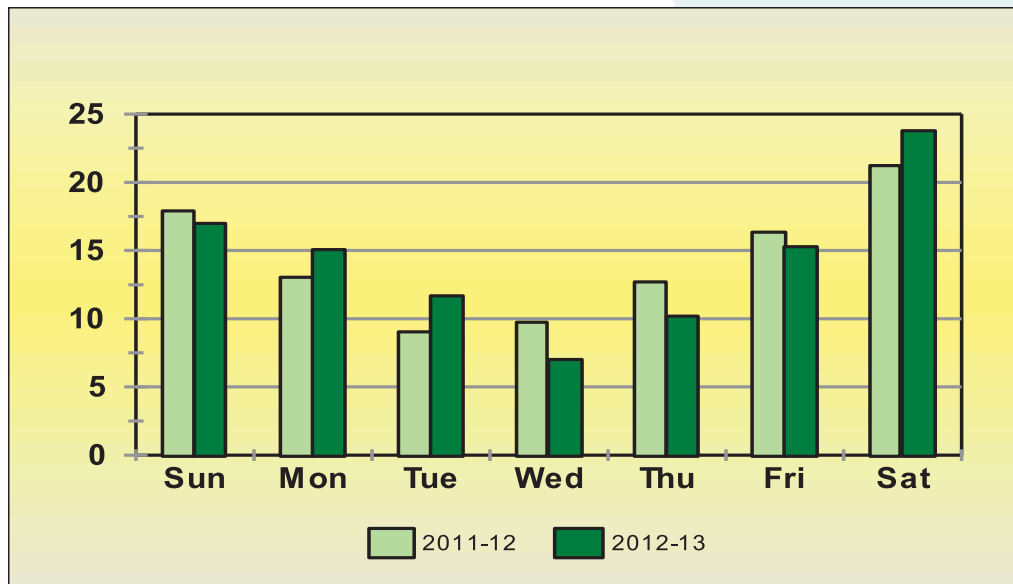
- Free State: decrease of 33 (31.73%) from 104 to 71; and
- Northern Cape: decrease of 6 (13.33%) from 45 to 39.

7. CRASHES PER DAY OF WEEK

The percentage of fatal crashes per day of the week per province during the 2012/2013 Festive Season is given in table below and the national figures in this regard.

Table 9: Percentage of Fatal Crashes per Day-of-Week								
Province	Sun	Mon	Tue	Wed	Thu	Fri	Sat	Total
Gauteng	24.53	16.98	7.55	5.66	9.43	11.32	24.53	100
Kwa-Zulu Natal	14.29	16.48	15.38	8.79	8.79	14.29	21.98	100
Western Cape	12.28	22.81	10.53	5.26	12.28	15.79	21.05	100
Eastern Cape	14.00	10.00	12.00	2.00	12.00	16.00	34.00	100
Free State	14.29	11.43	25.71	5.71	8.57	14.29	20.00	100
Mpumalanga	15.91	18.18	9.09	13.64	6.82	20.45	15.91	100
North West	15.69	7.84	5.88	1.96	9.80	29.41	29.41	100
Limpopo	21.79	8.97	11.54	10.26	14.10	7.69	25.64	100
Northern Cape	25.00	50.00	0.00	8.33	0.00	8.33	8.33	100
Total	16.99	15.07	11.68	7.01	10.19	15.29	23.78	100

Figure 8: Percentage of Fatal Crashes per Day of week



The information above shows that 23.78% of the weekly crashes happened on a Saturday during 2012/13. During 2011/12 55.48% of all fatal crashes happened over weekends from Friday to Sunday. However, during the 2012/13 about 56.06% of all fatal crashes happened over weekends from Friday to Sunday.

The province with the highest percentage of fatal crashes on a Friday was North West at 29.41% followed by Mpumalanga with 20.45%.

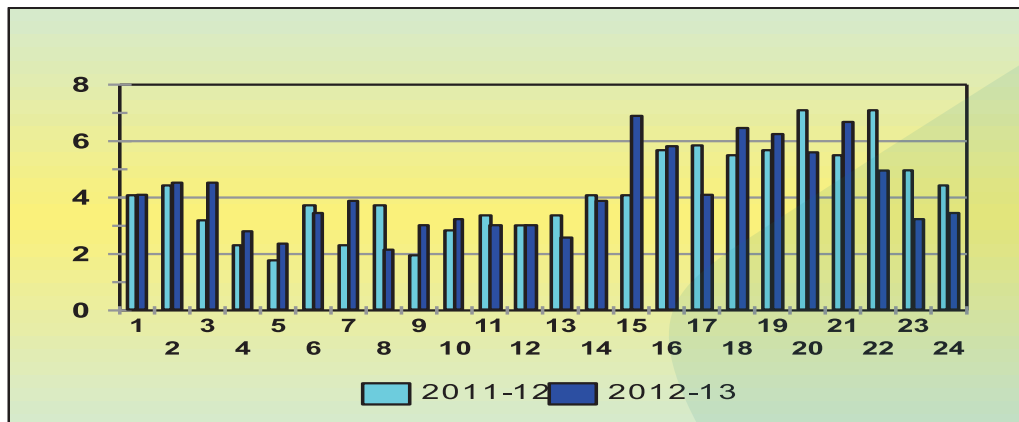
The province with the highest percentage of fatal crashes on a Saturday is the Eastern Cape at 34.00% followed by Gauteng with 29.41%.

The province with the highest percentage of fatal crashes on Sunday is the Northern Cape at 25.00% followed by Gauteng with 24.53%.

8. NUMBER OF CRASHES PER TIME OF DAY

The percentage of fatal crashes per time of day during 2012/2013 is reflected in the graph below:

Figure 9: Percentage of Fatal Crashes per Time of Day



The above information shows the following percentage of crashes for the respective hours of the day during 2012/2013.

- From 06:00 to 12:00 : 21.77%;
- From 12:00 to 18:00 : 29.74%; and
- From 18:00 to 00:00: 30.17%.

Which totals to 81.68% of all daily fatal crashes.

During the 2012/2013 festive season 25.22% of the daily fatal crashes happened during the early hours of the morning, between midnight and at 06:00 in the morning.

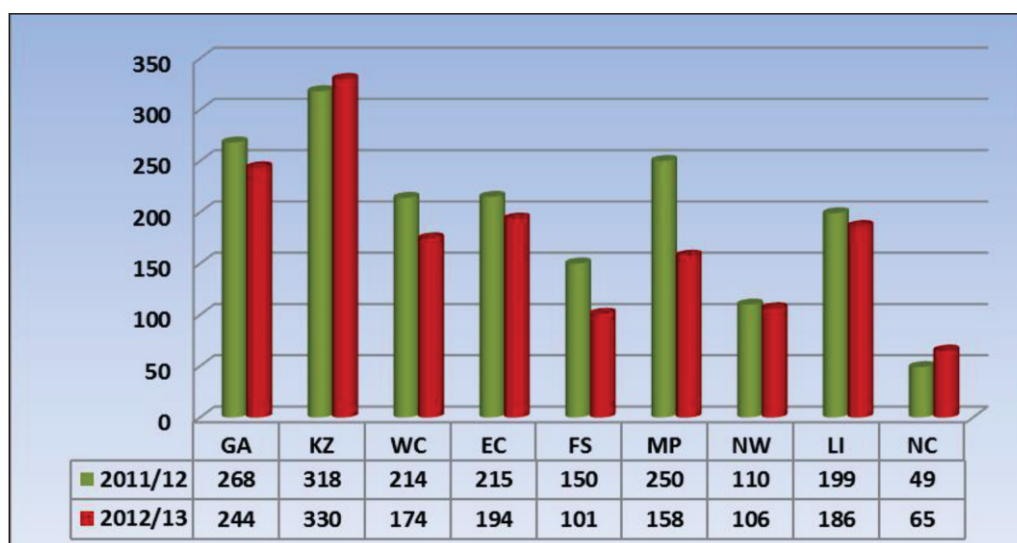
30.17% of the daily crashes happened between 18:00 in the evening and midnight (00:00). About 52.16% of the daily crashes happened generally during hours of darkness, between 18:00 in the evening and 06:00 the next morning.

9. NUMBER OF FATALITIES

The number of fatalities per province over Festive Season 2012/13 is given in the table and figure below:

Table 10: Number of Fatalities per Province over Festive										
Year	GA	KZ	WC	EC	FS	MP	NW	LI	NC	RSA
2011/12	268	318	214	215	150	250	110	199	49	1771
2012/13	244	330	174	194	101	158	106	186	65	1558
change	-24	12	-40	-21	-49	-93	-4	-13	16	-213
% change	-9.08	3.72	-18.51	-9.91	-32.74	-37.00	-3.42	-6.30	32.65	-12.05

Figure 10: Number of Fatalities per Province for 2011/12 and 2012/13



The number of fatalities decreased by 213 (12.05%) from 1771 fatalities over the same period the previous year to 1558.

With the exception of KwaZulu-Natal, Northern Cape all the provinces recorded decreases in fatalities. The provincial percentage of the biggest decreases was recorded as follows:

- Mpumalanga: decrease of 931 (37.00%) from 250 to 158;
- Free State: decrease of 49 (32.74%) from 150 to 101; and
- Western Cape: decrease of 40 (18.51%) from 214 to 174.

The biggest increase was recorded for Northern Cape with 37 (32.65%) from 49 to 65, followed by the KwaZulu-Natal with an increase of 12 (3.72%).

10. Fatalities per Road User Group

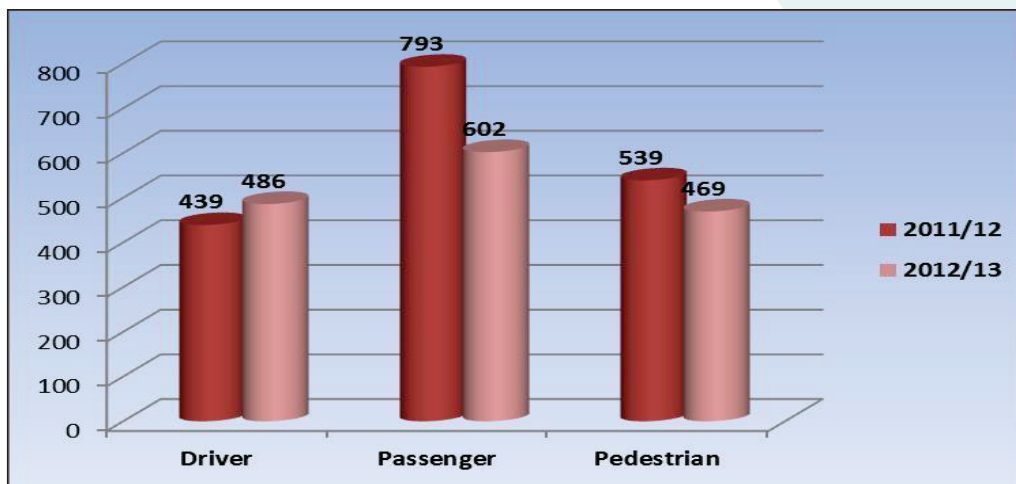
The number of fatalities per road user group (drivers, passengers and pedestrians) over the Festive period for 2012/13 is shown in the table below:

Table 11: Fatalities per user group

Fatalities	User Group	GA	KZ	WC	EC	FS	MP	NW	LI	NC	RSA
2011/12	Driver	60	74	55	60	33	60	43	44	11	439
	Passenger	93	107	93	89	117	149	30	96	18	793
	Pedestrian	115	138	66	66	0	40	36	59	20	539
	Total	268	318	214	215	150	250	110	199	49	1771
2012/13	Driver	86	95	47	45	36	74	25	58	20	486
	Passenger	54	120	72	106	50	46	47	77	29	602
	Pedestrian	104	115	55	43	15	37	34	51	16	469
	Total	244	330	174	194	101	158	106	186	65	1558
Change	Driver	26	21	-8	-15	2.5	14	-18	14	8.5	47
	Passenger	-39	13	-21	17	-67	-103	17	-19	11	-191
	Pedestrian	-11	-23	-11	-23	15	-3	-2	-8	-4	-70
	Total	-24	12	-40	-21	-49	-93	-4	-13	16	-213
% Change	Driver	43	28	-14	-25	8	24	-41	32	77	11
	Passenger	-42	13	-22	19	-57	-69	57	-19	63	-24
	Pedestrian	-10	-17	-17	-35		-7	-6	-14	-19	-13
	Total	-9	4	-19	-10	-33	-37	-3	-6	33	-12

The above information on the number of fatalities per road user group is also reflected in the graph below:

Figure 11: Number of Fatalities per road user group



The number of fatalities per user group were recorded and with an increase in the driver fatalities. A decrease was recorded for passengers and pedestrians with 24% and 13% respectively.

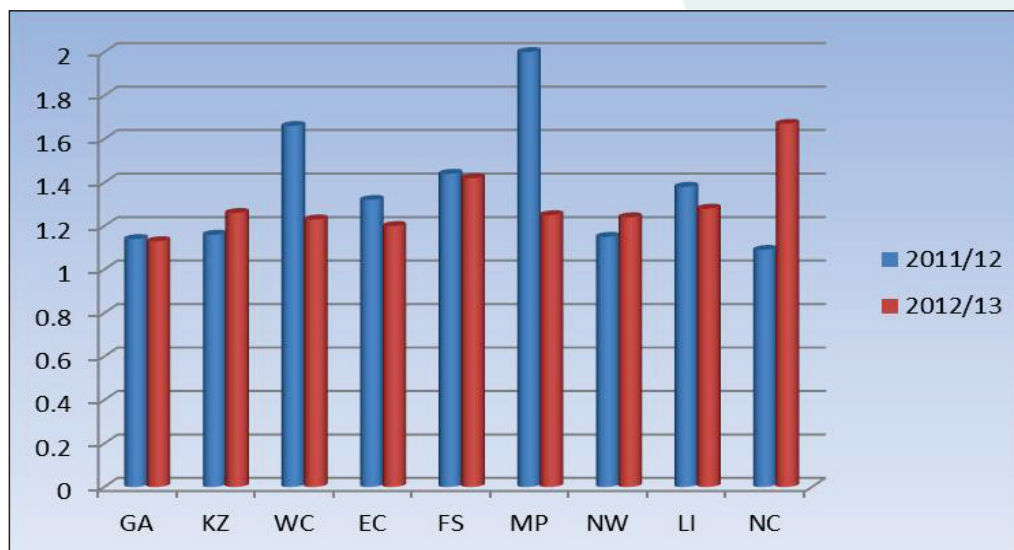
11. Severity of Fatal Crashes

The severity of fatal crashes decreased by 0.10 (7.18%) from 1.35 during 2011/2012 to 1.25 during 2012/2013. The individual provincial severity rates are shown in table below.

Table 12: Severity of crashes per Province over Festive										
Year	GA	KZ	WC	EC	FS	MP	NW	LI	NC	RSA
2011/12	1.14	1.16	1.66	1.32	1.44	2.00	1.15	1.38	1.09	1.35
2012/13	1.13	1.26	1.23	1.20	1.42	1.25	1.24	1.28	1.67	1.25
change	-0.01	0.11	-0.43	-0.12	-0.02	-0.75	0.09	-0.10	0.58	-0.10
% change	-0.62	9.29	-25.97	-8.79	-1.47	-37.50	7.81	-7.59	53.06	-7.18

The information in the table above shows that the severity rate in Northern Cape increased by 53.06% followed by Kwa-Zulu Natal with 9.29%. The rate in Mpumalanga decreased by 37.50%, followed by Western Cape with 25.97%. The provincial rates for the two comparative years in this regard are also reflected in the figure below.

Figure 12: Severity rate of crashes per Province over Festive



12. MAJOR FATAL CRASHES OVER FESTIVE SEASON 2012/2013

During the last festive period (2012/13) 20 major crashes were investigated whereby 156 fatalities were recorded and 73 injuries. For the current festive under review the Corporation investigated twenty five (25) Major Crashes during the festive season in which one hundred and thirty-six (136) people lost their lives and eighty-seven (87) people were injured. It is clear that the number of crashes and injuries increased, however the number of fatalities decreased.

The three worst major crashes happened in Gauteng, Mpumalanga and Free State. In Gauteng it happened on the R513 between Bronkhorstspuit and Ekandustria Road with 16 fatalities and 2 injuries. The collision happened between a minibus and a heavy goods truck.

The second worst major crash was in Mpumalanga, happened on the P168 road between Ermelo and Lothair, between an LMV and three (3) LDVs, which resulted in seven (7) fatalities with no injuries.

The third worst major crash was in Free State on the N3 between Warden and Roadside. The crash happened between a minibus and an LMV, resulting in seven (7) fatalities with no injuries.

The most common type of crash identified were as the follows:

- Head-on collisions(12);
- Fixed object crashes (5); and
- Single vehicle overturned (3).

13. MEDIA LIAISON

A total of 484 interviews were conducted on various local, regional, and national print and electronic media from the 1st December 2012 – 8th January 2013.



14. CONCLUSION

The biggest increase of traffic was experienced on the main routes leading out of Gauteng, with the N1 North and South, the N3 towards KwaZulu-Natal and the N4 towards Mpumalanga having the highest traffic volumes.

The target of stopping and screening one million vehicles for the month of December was exceeded. **(Target: 1 million, Actual 1 585 920).**

ANNEXURE SOUTH AFRICAN SNAPSHOT

Province	Number of registered vehicles Dec-12	Number of Driving Licences Issued per Province	Number of Fatal Crashes: 2012/13	Number of Fatalities: 2012/13
Gauteng	4,112,343	3,591,029	215	244
KwaZulu-Natal	1,438,997	1,609,119	261	330
Western Cape	1,698,173	1,640,888	142	174
Eastern Cape	715,548	739,954	161	194
Free State	579,461	542,029	71	101
Mpumalanga	718,213	665,598	126	158
North West	546,669	486,976	86	106
Limpopo	558,813	686,745	146	186
Northern Cape	242,454	192,827	39	65
RSA	10,610,671	10,155,165	1 247	1558

“THE TARGET OF STOPPING AND SCREENING ONE MILLION VEHICLES FOR THE MONTH OF DECEMBER WAS EXCEEDED. (TARGET: 1 MILLION, ACTUAL 1 585920).”

Road Traffic Management Corporation

Physical Address

Boardwalk Office Park
Boardwalk Boulevard
Faerie Glen
0043

Private Bag X147
Pretoria
0001

Telephone Number

012 999 5200

Website Address

www.rtmc.co.za



Road Traffic
Management Corporation